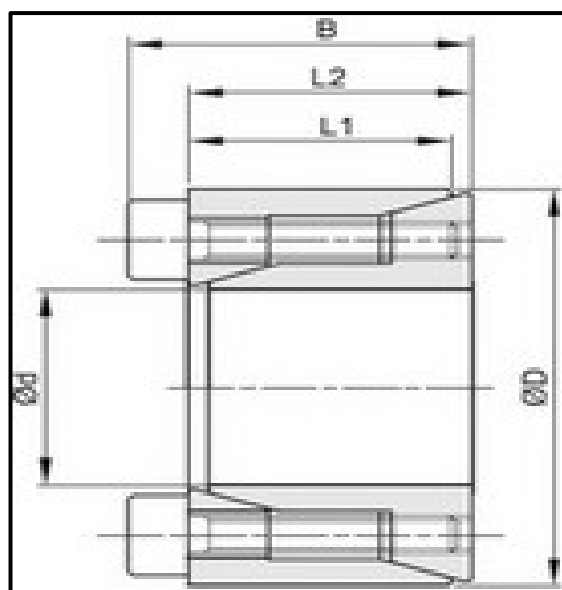


BAGUE DE SERRAGE - TYPE 61



BAGUE DE SERRAGE - TYPE 61					
d x D - mm	L1 - mm	L2 - mm	B - mm	Couple - Nm	Force axiale - KN
10 x 20	12,5	13	15,5	20	4
14 x 26	16,5	17	20	42	6
16 x 32	16,5	17	21	83	10
19 x 35	20,5	21	25	99	10
20 x 38	20,5	21	26	170	17
24 x 47	25	26	32	287	24
25 x 47	25	26	32	299	24
30 x 55	25	26	32	539	36