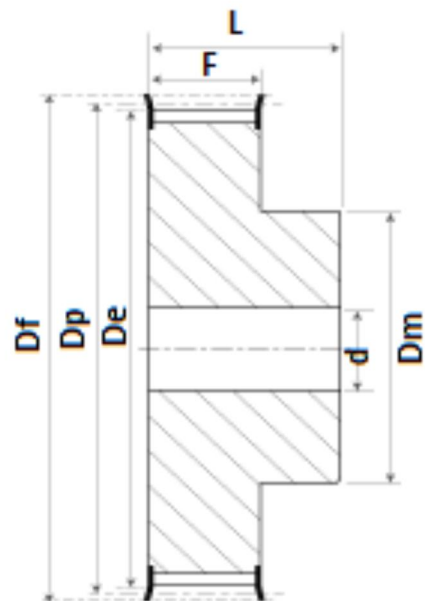
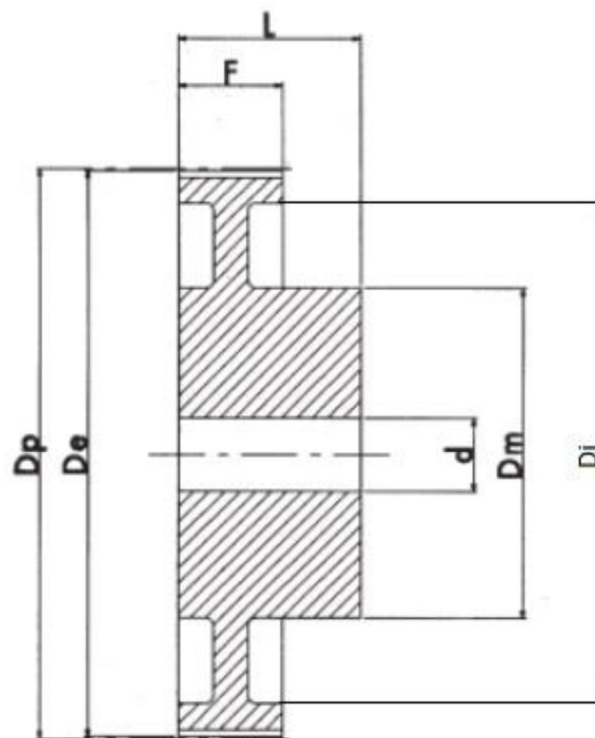


L 050 / L 075 / L 100



2F



L 050

Réf	Nbr de dents	Type	Dp	De	Df	Dm	F	L	d
10 L 050	10	2F	30.32	29.56	36	20	19	28	8
11 L 050	11	2F	33.35	32.59	38	24	19	30	8
12 L 050	12	2F	36.38	35.62	42	24	19	30	8
13 L 050	13	2F	39.41	38.65	44	28	19	30	8
14 L 050	14	2F	42.44	41.68	48	28	19	30	8
15 L 050	15	2F	45.48	44.72	51	34	19	30	8
16 L 050	16	2F	48.51	47.75	54	36	19	32	8
17 L 050	17	2F	51.54	50.78	57	36	19	32	10
18 L 050	18	2F	54.57	53.81	60	40	19	32	10
19 L 050	19	2F	57.61	56.84	63	40	19	32	10
20 L 050	20	2F	60.64	59.88	66	40	19	32	10
21 L 050	21	2F	63.67	62.91	71	45	19	32	10
22 L 050	22	2F	66.70	65.94	75	45	19	32	10
23 L 050	23	2F	69.73	68.97	79	55	19	32	10
24 L 050	24	2F	72.77	72.00	79	55	19	32	10
25 L 050	25	2F	75.80	75.04	83	58	19	32	10
26 L 050	26	2F	78.83	78.07	87	58	19	32	12
27 L 050	27	2F	81.86	81.10	87	58	19	32	12
28 L 050	28	2F	84.89	84.13	91	58	19	32	12
30 L 050	30	2F	90.96	90.20	97	70	19	32	12
32 L 050	32	2F	97.03	96.26	103	70	19	32	12

Réf	Nbr de dents	Type	Dp	De	Df	Dm	F	L	d
33 L 050	33	2F	100.05	99.29	106	70	19	32	12
34 L 050	34	2F	103.08	102.32	111	70	19	32	12
35 L 050	35	2F	106.12	105.35	111	70	19	32	12
36 L 050	36	2F	109.15	108.39	115	70	19	32	12
40 L 050	40	2F	121.29	120.51	127	70	19	32	12
42 L 050	42	2F	127.34	126.58	135	70	19	32	12
44 L 050	44	2F	133.40	132.64	140	70	19	32	12
45 L 050	45	2F	136.44	135.67	143	70	19	32	12
48 L 050	48	2F	145.53	144.77	152	70	19	32	12
50 L 050	50	4	151.60	150.83	-	70	19	32	14
52 L 050	52	4	157.66	156.90	-	70	19	32	14
56 L 050	56	4	169.79	169.02	-	70	19	32	14
57 L 050	57	4	172.82	172.06	-	70	19	32	14
60 L 050	60	4	181.91	181.15	-	75	19	42	14
72 L 050	72	4	218.29	217.56	-	75	19	42	14
84 L 050	84	4	254.68	253.92	-	75	19	42	14
96 L 050	96	4	291.06	290.30	-	75	19	42	14

L 075

Réf	Nbr de dents	Type	Dp	De	Df	Dm	F	L	d
10 L 075	10	2F	30.32	29.56	36	20	25.4	38	8
11 L 075	11	2F	33.35	32.59	38	24	25.4	38	8
12 L 075	12	2F	36.38	35.62	42	24	25.4	38	8
13 L 075	13	2F	39.41	38.65	44	28	25.4	38	8
14 L 075	14	2F	42.44	41.68	48	28	25.4	38	8
15 L 075	15	2F	45.48	44.72	51	34	25.4	38	8
16 L 075	16	2F	48.51	47.75	54	36	25.4	38	8
17 L 075	17	2F	51.54	50.78	57	36	25.4	38	10
18 L 075	18	2F	54.57	53.81	60	40	25.4	38	10
19 L 075	19	2F	57.61	56.84	63	40	25.4	38	10
20 L 075	20	2F	60.64	59.88	66	40	25.4	38	10
21 L 075	21	2F	63.67	62.91	71	45	25.4	38	10
22 L 075	22	2F	66.70	65.94	75	45	25.4	38	10
23 L 075	23	2F	69.73	68.97	79	55	25.4	38	10
24 L 075	24	2F	72.77	72.00	79	55	25.4	38	10
25 L 075	25	2F	75.80	75.04	83	58	25.4	38	10
26 L 075	26	2F	78.83	78.07	87	58	25.4	38	12
27 L 075	27	2F	81.86	81.10	87	58	25.4	38	12
28 L 075	28	2F	84.89	84.13	91	58	25.4	38	12
30 L 075	30	2F	90.96	90.20	97	70	25.4	38	12
32 L 075	32	2F	97.03	96.26	103	70	25.4	38	12

Réf	Nbr de dents	Type	Dp	De	Df	Dm	F	L	d
34 L 075	34	2F	103.08	102.32	111	70	25.4	38	12
35 L 075	35	2F	106.12	105.35	111	70	25.4	38	12
36 L 075	36	2F	109.15	108.39	115	70	25.4	38	12
40 L 075	40	2F	121.29	120.51	127	70	25.4	38	12
42 L 075	42	2F	127.34	126.58	135	70	25.4	38	12
44 L 075	44	2F	133.40	132.64	140	70	25.4	38	12
45 L 075	45	2F	136.44	135.67	143	70	25.4	38	12
48 L 075	48	2F	145.53	144.77	152	70	25.4	38	12
50 L 075	50	4	151.60	150.83	-	70	25.4	38	14
52 L 075	52	4	157.66	156.90	-	70	25.4	38	14
56 L 075	56	4	169.79	169.02	-	70	25.4	38	14
57 L 075	57	4	172.82	172.06	-	70	25.4	38	14
60 L 075	60	4	181.91	181.15	-	75	25.4	45	14
72 L 075	72	4	218.29	217.53	-	75	25.4	45	14
84 L 075	84	4	254.68	253.92	-	75	25.4	45	14
96 L 075	96	4	291.06	290.30	-	75	25.4	45	14

L 100

Réf	Nbr de dents	Type	Dp	De	Df	Dm	F	L	d
10 L 100	10	2F	30.32	29.56	36	20	31.8	45	8
11 L 100	11	2F	33.35	32.59	38	24	31.8	45	8
12 L 100	12	2F	36.38	35.62	42	24	31.8	45	8
13 L 100	13	2F	39.41	38.65	44	28	31.8	45	8
14 L 100	14	2F	42.44	41.68	48	28	31.8	45	10
15 L 100	15	2F	45.48	44.72	51	34	31.8	45	10
16 L 100	16	2F	48.51	47.75	54	36	31.8	45	10
17 L 100	17	2F	51.54	50.78	57	36	31.8	45	10
18 L 100	18	2F	54.57	53.81	60	40	31.8	45	10
19 L 100	19	2F	57.61	56.84	63	40	31.8	45	10
20 L 100	20	2F	60.64	59.88	66	40	31.8	45	10
21 L 100	21	2F	63.67	62.91	71	45	31.8	45	10
22 L 100	22	2F	66.70	65.94	75	45	31.8	45	12
23 L 100	23	2F	69.73	68.97	79	55	31.8	45	12
24 L 100	24	2F	72.77	72.00	79.	55	31.8	45	12
25 L 100	25	2F	75.80	75.04	83	58	31.8	45	12
26 L 100	26	2F	78.83	78.07	87	58	31.8	45	12
27 L 100	27	2F	81.86	81.10	87	58	31.8	45	12
28 L 100	28	2F	84.89	84.13	91	58	31.8	45	12
30 L 100	30	2F	90.96	90.20	97	70	31.8	45	12
32 L 100	32	2F	97.03	96.26	103	70	31.8	45	12

Réf	Nbr de dents	Type	Dp	De	Df	Dm	F	L	d
33 L 100	33	2F	100.05	99.29	106	70	31.8	45	12
34 L 100	34	2F	103.08	102.32	111	70	31.8	45	12
35 L 100	35	2F	106.12	105.35	111	70	31.8	45	12
36 L 100	36	2F	109.15	108.39	115	70	31.8	45	12
40 L 100	40	2F	121.29	120.51	127	70	31.8	45	12
42 L 100	42	2F	127.34	126.58	135	70	31.8	45	12
44 L 100	44	2F	133.40	132.64	140	70	31.8	45	12
45 L 100	45	2F	136.44	135.67	143	70	31.8	45	12
48 L 100	48	2F	145.53	144.77	152	70	31.8	45	12
50 L 100	50	4	151.6	150.83	-	70	31.8	45	14
52 L 100	52	4	157.66	156.90	-	70	31.8	45	14
56 L 100	56	4	169.79	169.02	-	70	31.8	45	14
57 L 100	57	4	172.82	172.06	-	70	31.8	45	14
60 L 100	60	4	181.91	181.15	-	75	31.8	45	14
72 L 100	72	4	218.29	217.53	-	75	31.8	45	14
84 L 100	84	4	254.68	253.92	-	75	31.8	45	14
96 L 100	96	4	291.06	290.30	-	75	31.8	45	14